



UNIVERSITY *of* MARYLAND  
FACULTY PHYSICIANS, INC.

Faculty Practices of the  
University of Maryland School of Medicine

# New Faculty Orientation

## October 19, 2011

# Our Mission

- Support the clinical care mission of the School of Medicine and the activities of the faculty practice groups
- Provide the mechanism through which professional fee income is billed, collected and distributed for the benefit of the faculty and the School of Medicine
- Assure compliance with the Medical Service Plan (MSP)

# Organizational Structure

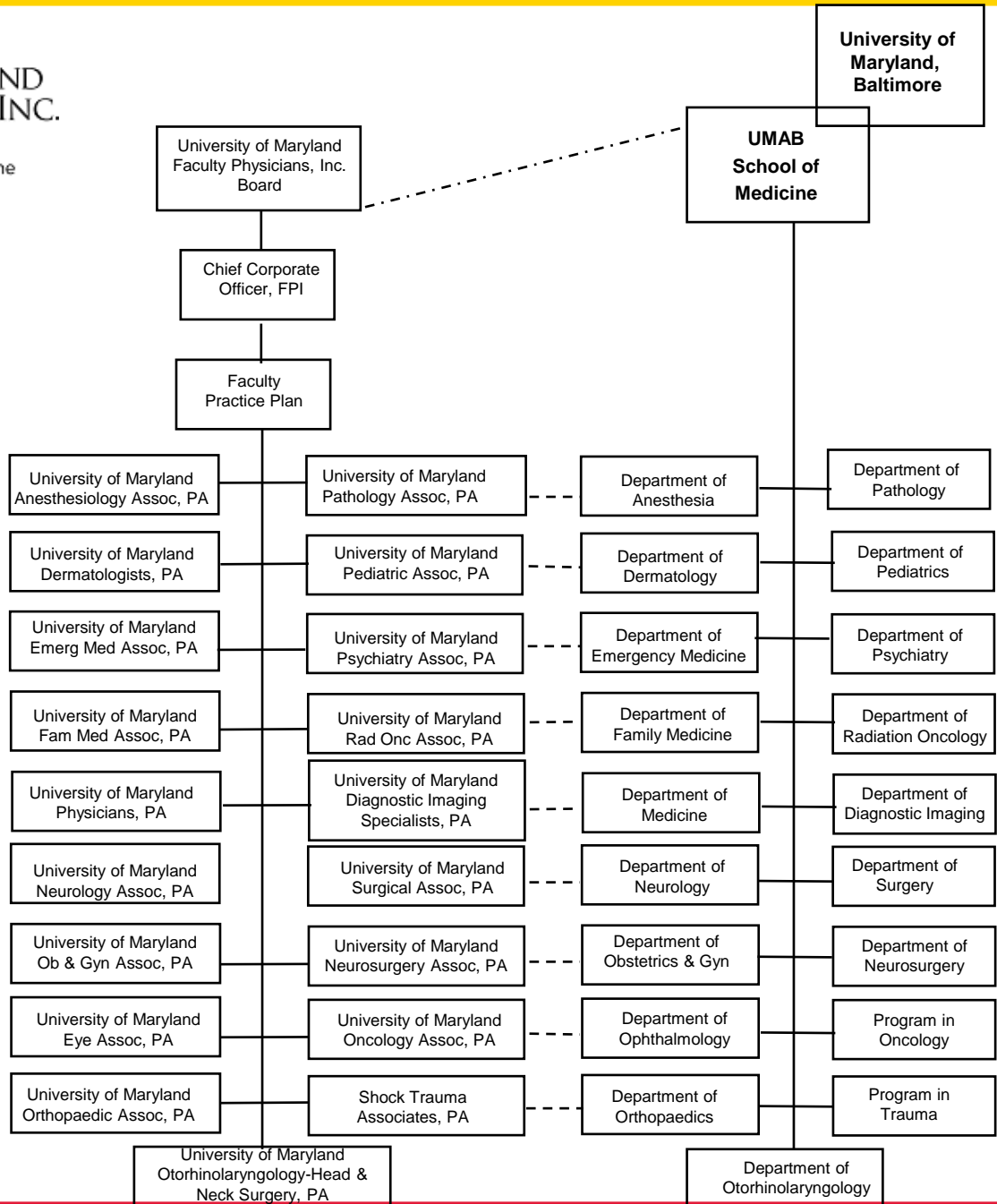
- All Full-time and Part-time clinical faculty are “members”
- The Board of Trustees, comprised of the SOM clinical department chairs and the Dean of the SOM, governs and manages the organization



**UNIVERSITY of MARYLAND  
FACULTY PHYSICIANS, INC.**

Faculty Practices of the  
University of Maryland School of Medicine

**University of  
Maryland,  
Baltimore**



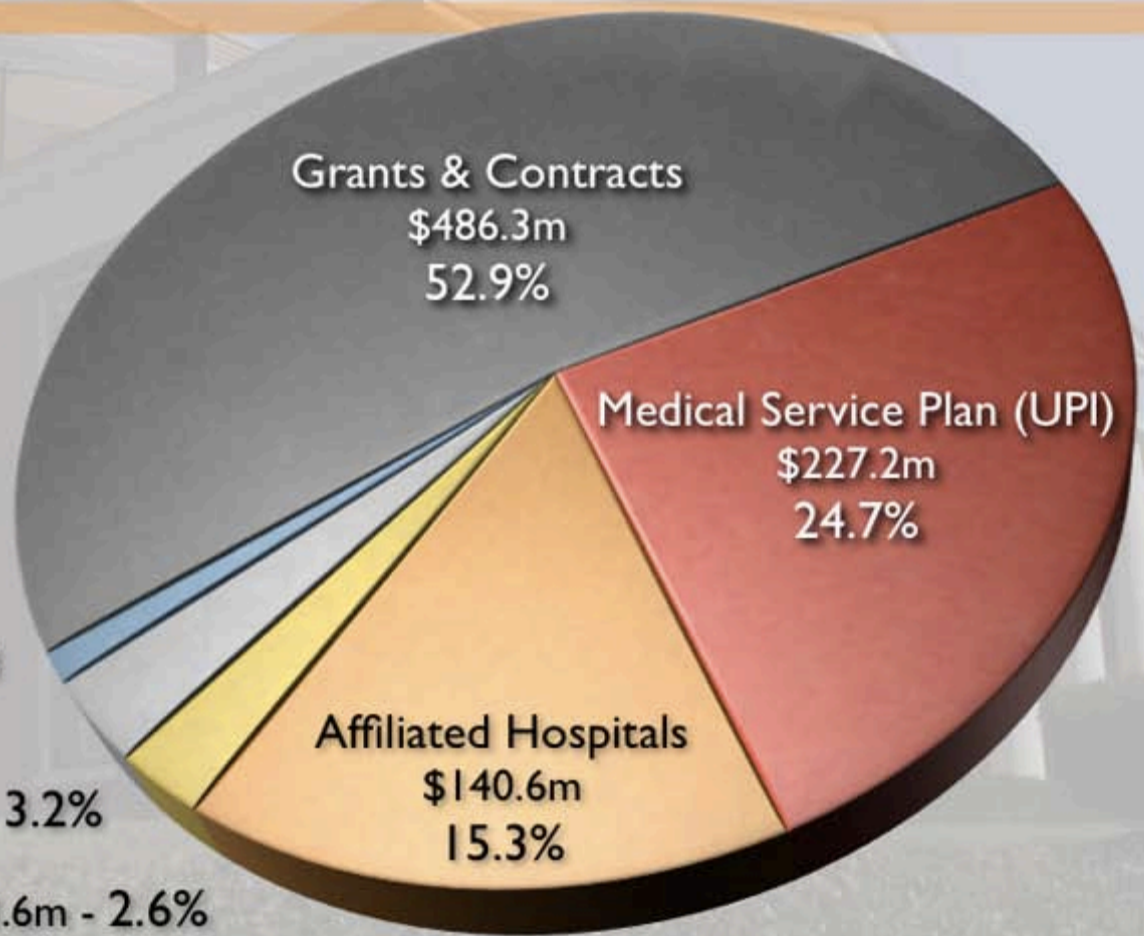
# UNIVERSITY OF MARYLAND SCHOOL OF MEDICINE

## FY 2011 REVENUES

**Total Revenues**  
Nearly \$1 billion

**Economic Impact**  
Nearly \$2 billion

- Gifts & Other Income Expended  
\$11.3m - 1.2%
- State Appropriations - \$29.6m\* - 3.2%
- Tuition & Fees - \$23.6m - 2.6%

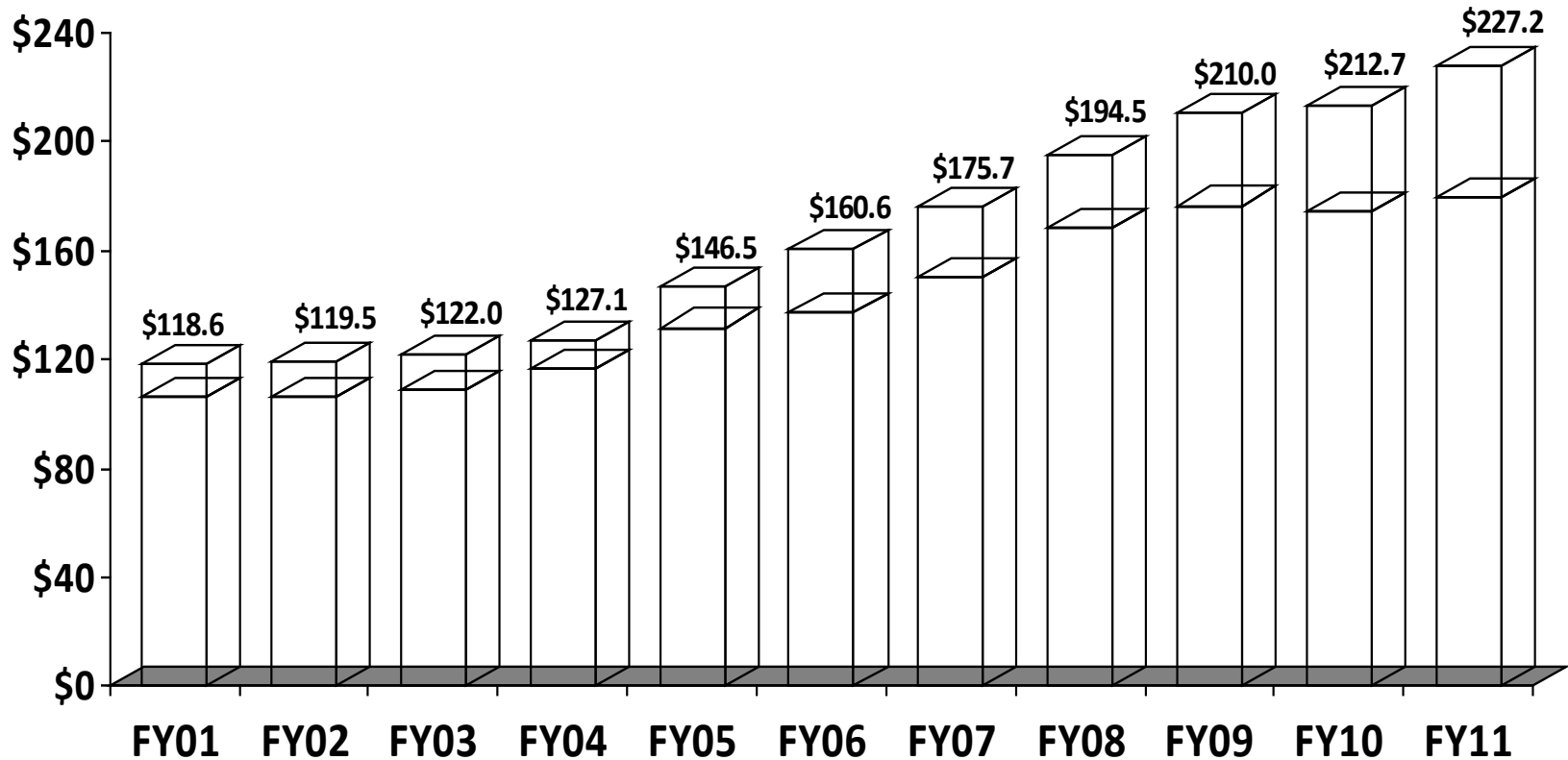


**Total Clinical Contribution - 40.0%**

\* Includes fringe benefits and Maryland Psychiatric Research Center transfer from contract to state appropriation.

# University of Maryland Faculty Physicians, Inc.

## *Total Clinical Revenue FY 2001-2011*



□ Professional Fee Revenue

□ Clinical Revenue (Non Fee for Service)

# Compliance General Expectations

- Comply with all applicable laws, regulations and guidance, including those concerning Medicare, Medicaid and all other federal health care programs.
- Maintain medical records that accurately reflect the care given to the patient.
- Personal investments or other activities which may create, or give the appearance of, a conflict of interest are to be avoided.

# Compliance General Expectations...

- Seek advice and direction if the application of any law, regulation, guidance, policy or procedure is uncertain.
  - Individual department contact the FPI Compliance Office for advice.

# Compliance General Expectations...

- Report through the FPI Compliance Program any suspected violations.
  - Report through the Compliance Program Hotline.
  - FPI will not tolerate any retaliation for a good faith disclosure or for participation in any related investigation.



UNIVERSITY  
of MARYLAND  
UNIVERSITY OF MARYLAND  
FACULTY PHYSICIANS, INC.  
419 west redwood

UNIVERSITY  
of MARYLAND  
UNIVERSITY OF MARYLAND  
FACULTY PHYSICIANS, INC.  
419 west redwood



## FPI Practice Locations



	<b>Cardiology Carroll County</b>
	<b>UPI at Upper Chesapeake</b>
	<b>Texas Station Orthopaedics</b>
	<b>College Park Orthopaedics</b>
	<b>BMWC</b>
	<b>Radiation Oncology: Columbia</b>

**UMMC-University of Maryland Medical Center and Downtown Locations**  
 \*\* Family Medicine, Frenkil Bldg, OB/GYN Penn St, Peds at the Harbor,  
 Psychiatric Bldg, UM Professional Bldg

# **University of Maryland Faculty Physicians, Inc.**

## ***Key Initiatives for FY 2012***

- **Implement and optimize the Patient Centered Medical Home**
- **Move to a faster-paced Epic implementation for the Ambulatory EMR**
- **Continue to push Service Excellence and Accountability**
- **Migrate significant services to Maryland General**