

# University of Maryland School of Medicine

## *New Faculty Orientation*

# Welcome

**E. Albert Reece, MD, PhD, MBA**

*Vice President for Medical Affairs, University of Maryland  
John Z. and Akiko K. Bowers Distinguished Professor and  
Dean, University of Maryland School of Medicine*

**October 19, 2011  
SMC Campus Center**



UNIVERSITY of MARYLAND  
SCHOOL OF MEDICINE

# The University of Maryland School of Medicine Celebrated its Bicentennial in 2007

## Establishment of Medical Schools in the U.S.

University of Pennsylvania	1765 - 1 <sup>st</sup>
Columbia (University College of Physicians & Surgeons)	1768 - 2 <sup>nd</sup>
Harvard	1783 - 3 <sup>rd</sup>
Dartmouth	1798 - 4 <sup>th</sup>
<b>College of Medicine of Maryland</b> <b>(<u>OLDEST</u> PUBLIC MEDICAL SCHOOL IN AMERICA)</b>	<b>1807 - 5<sup>th</sup></b>



# University of Maryland School of Medicine: 200+ Years of Firsts

- 1823** First medical school in U.S. to build its own hospital for clinical instruction
- 1833** First course in the nation on hygiene or preventive medicine
- 1848** First medical school to require anatomical dissection
- 1866** First chair of gynecology and pediatrics in the nation established
- 1900** First experimentally-induced case of yellow fever
- 1902** Discovery of Wright's stain
- 1906** First description of a new disease, histoplasmosis



# University of Maryland School of Medicine: 200+ Years of Firsts

- 1993** Developed beta interferon to alter the course of multiple sclerosis
- 1999** Developed first blood test to detect the enzyme telomerase, which can indicate the early spread of lung cancer
- 2000** Developed an edible vaccine in the form of a genetically engineered potato that delivers protection against E. coli
- 2009** Researchers complete the genomic sequencing of the human rhinoviruses (common colds) and assemble them into a “family tree”
- 2010** Faculty surgeons complete the world’s first robotically assisted, minimally invasive aortic valve bypass surgery



# New Faculty Orientation

## *Total 159 New Faculty - October 19, 2011*

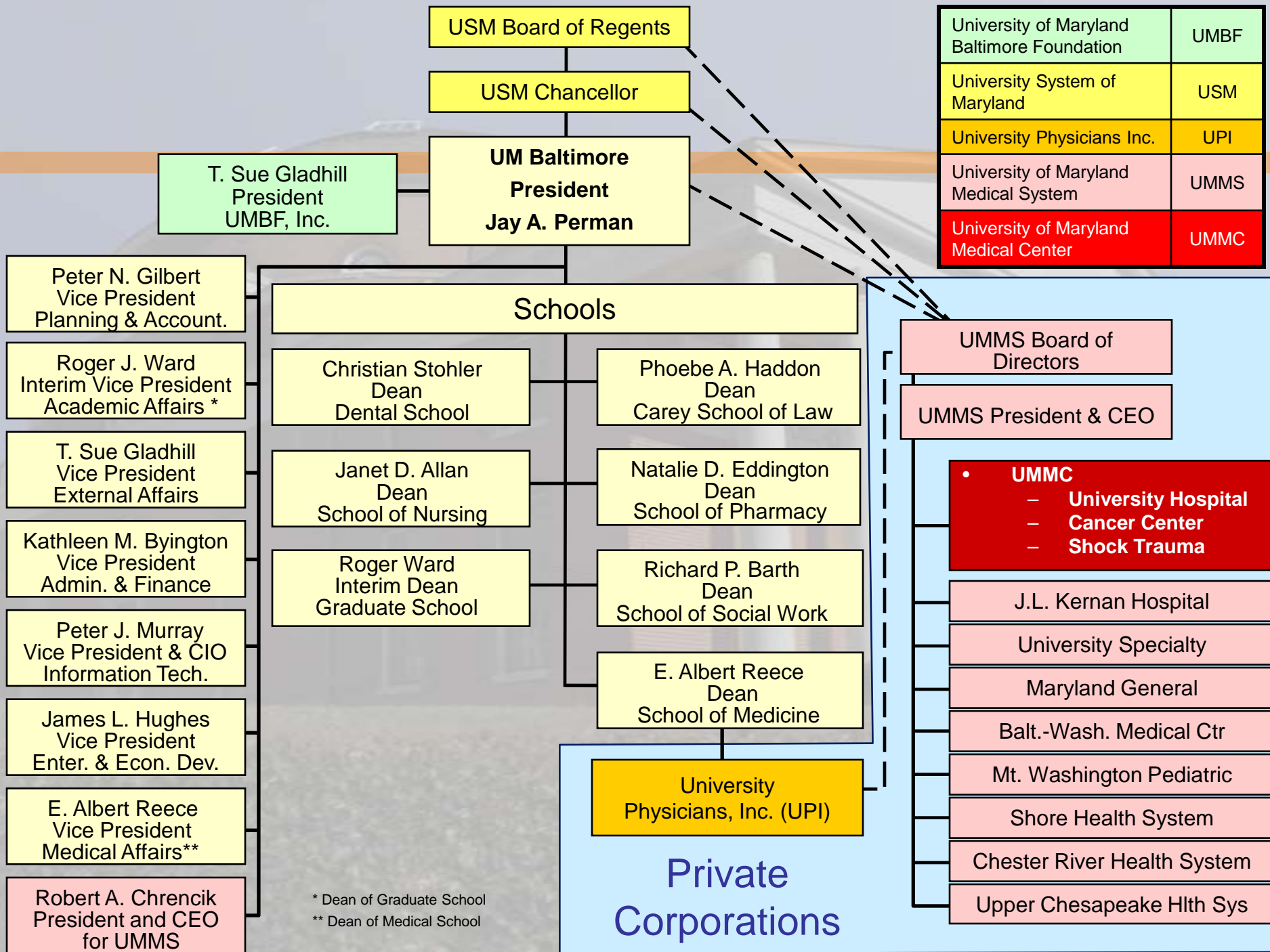
- **50% Female, 50% Male**
- **10.1% Underrepresented minority**
- **By Rank:**
  - ✓ **Professors – 9**
  - ✓ **Associate Professors – 8**
  - ✓ **Assistant Professors – 96**
  - ✓ **Instructors/Research Associates - 46**
- **By Tenure Status:**
  - ✓ **Tenured – 3**
  - ✓ **Tenure Track – 19**
  - ✓ **Non-tenure track – 137**
- **23 of 25 UMSOM departments**
- **134 in Clinical departments**
- **19 in Basic Science departments**
- **6 in Allied Health departments**



\* Data since October 2010 New Faculty Orientation

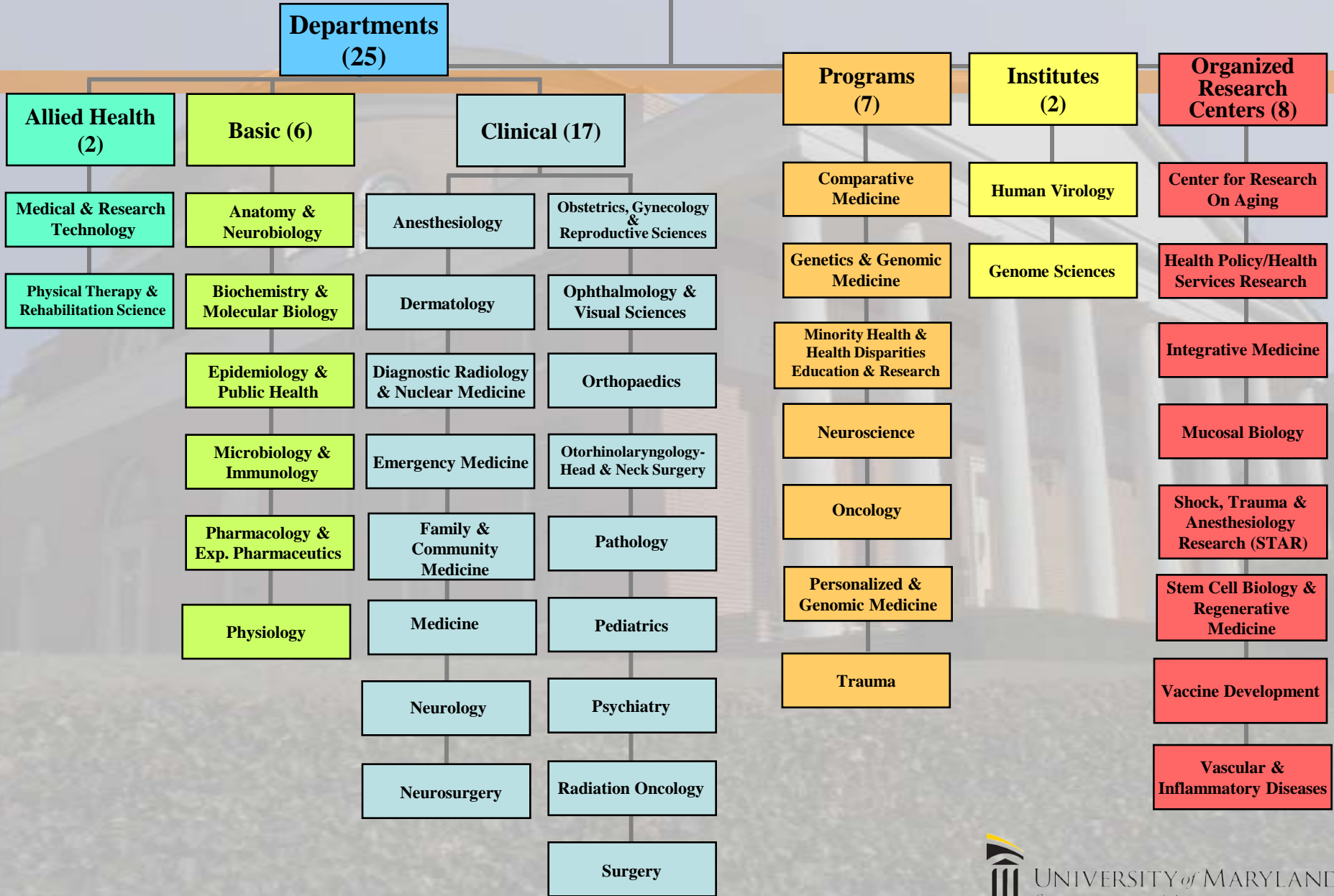


UNIVERSITY of MARYLAND  
SCHOOL OF MEDICINE



# University of Maryland School of Medicine

## VP for Medical Affairs & Dean



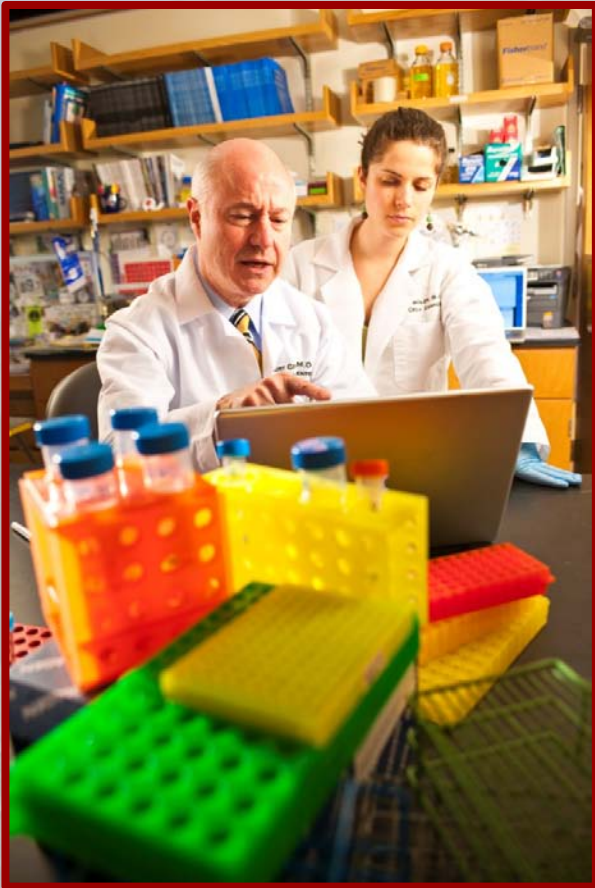
# TOTAL WORKFORCE

	2010	2011	
<b>Full-Time Faculty</b>	<b>1,296</b>	<b>1,334</b>	2,839
<b>Part-Time Faculty</b>	<b>248</b>	<b>279</b>	
<b>Volunteer Faculty</b>	<b>1,256</b>	<b>1,226</b>	
<b>Clinical Fellows*</b>	<b>209</b>	<b>209</b>	565
<b>Research Fellows</b>	<b>336</b>	<b>356</b>	
<b>Residents*</b>	<b>577</b>	<b>613</b>	
<b>Staff</b>	<b>2,308</b>	<b>2,279</b>	3,280
<b>University Physicians, Inc. Staff</b>	<b>960</b>	<b>1,001</b>	
<b>TOTAL INDIVIDUALS</b>	<b>7,190</b>	<b>7,297</b>	

*\*UMMC pays salaries of most*

# University of Maryland School of Medicine

Research



# Research Vision & Major Research Programs

## INCREASE THE IMPACT OF RESEARCH AND DISCOVERY ON HUMAN HEALTH

- Create and/or expand research magnet programs and funding
- Increase emphasis on translational research
- Increase emphasis on collaboration and multi-disciplinary groups
- Increase consortia grants and contacts
- Enhance faculty recruitment and retention
- Achieve Top-10 ranking

## MAJOR PROGRAMS BASED ON FUNDING

- AIDS/HIV
- Aging
- Bioterrorism Defense
- Cardiovascular Disease
- Cancer
- Community Mental Health
- Diabetes
- Disparities
- Genomics
- Infectious Diseases
- Metabolic Disorders
- Schizophrenia
- Transplant
- Trauma
- Vaccines



# Total Grants & Contracts FY2006-2011\*

SINCE 2000, SOM HAS RECEIVED:  
**\$3.9 BILLION** IN TOTAL GRANTS & CONTRACTS  
**\$1.7 BILLION** IN NIH FUNDING



\*This includes all new stimulus fund grants



**UMSOM NATIONAL RANK 2010**  
**7<sup>th</sup> OUT OF ALL 76 PUBLIC**  
***MEDICAL SCHOOLS (top 10%)***

Rank	School	Grants & Contracts
1.	U Washington	\$744,241,083
2.	UCSF	\$716,979,382
3.	UCLA-Geffen	\$549,560,156
4.	UCSD	\$364,628,771
5.	Colorado	\$342,098,194
6.	Michigan	\$327,871,117
7.	Maryland	\$324,777,012
8.	North Carolina	\$281,859,300
9.	UT Southwestern	\$242,731,977
10.	Alabama	\$242,368,892

**UMSOM NATIONAL RANK 2010**  
**17<sup>th</sup> OUT OF ALL 134 Public &**  
***Private Medical Schools (top 15%)***

Rank	School	Grants & Contracts
1.	Harvard	\$1,847,551,083
4.	Duke	\$590,367,474
5.	Columbia	\$562,156,070
7.	Pennsylvania	\$535,044,933
8.	Johns Hopkins	\$516,093,080
9.	Mount Sinai	\$478,035,838
10.	Pittsburgh	\$435,721,426
11.	Wash U-St. Louis	\$424,096,944
12.	Yale	\$417,186,715
13.	Stanford	\$379,013,366
17.	Maryland	\$324,777,012
18.	Baylor	\$315,623,815

**Source: AAMC**



UNIVERSITY of MARYLAND  
 SCHOOL OF MEDICINE

# Technology Transfer

	SOM Inventors	Company
<b>Products on the Market:</b>		
<b>Stroke Rehab Device</b>	Jill Whithall, PhD Sandy Macomb Waller, PT, PhD	EncorePath, Baltimore
<b>Medical Information System</b>	Marcelo Cardarelli, MD, MPH	Blk Medical Technologies, Baltimore
<b>Phase III Clinical Trials:</b>		
<b>Cholera Vaccine (2012)</b>	Myron Levine, MD, DTPH James Kaper, PhD	PaxVax, San Diego
<b>Phase II Clinical Trials:</b>		
<b>Stroke</b>	Marc Simard, MD, PhD	Remedy Pharmaceuticals, New York
<b>Celiac Disease</b>	Alessio Fasano, MD	Alba Therapeutics, Baltimore
<b>Cancer</b>	Scott Strome, MD	Gliknik, Baltimore
<b>Prostate Cancer</b>	Vincent Njar, PhD Angela Brodie, PhD	Tokai, Boston

	2010	2011
<b>U.S. Patents Issued</b>	15	24
<b>Foreign Patents Issued</b>	29	65
<b>Scientific Disclosures</b>	83	77
<b>Technology Inventions Licensed</b>	15	15
<b>Start-Up Companies Formed</b>	4	3

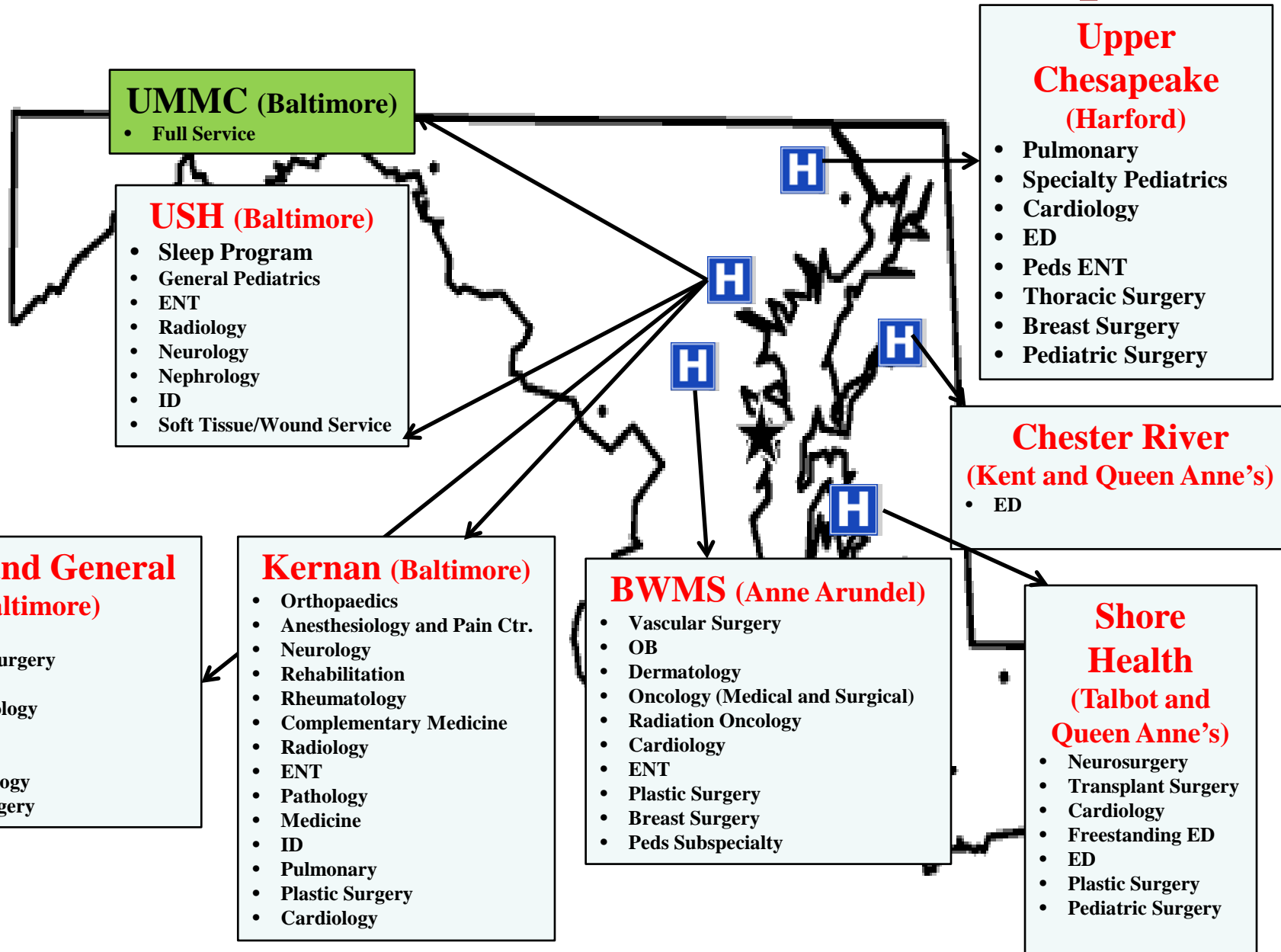


# University of Maryland School of Medicine

## Clinical



# UMSOM Clinical Services at UMMS Hospitals



# Practice Plan Performance

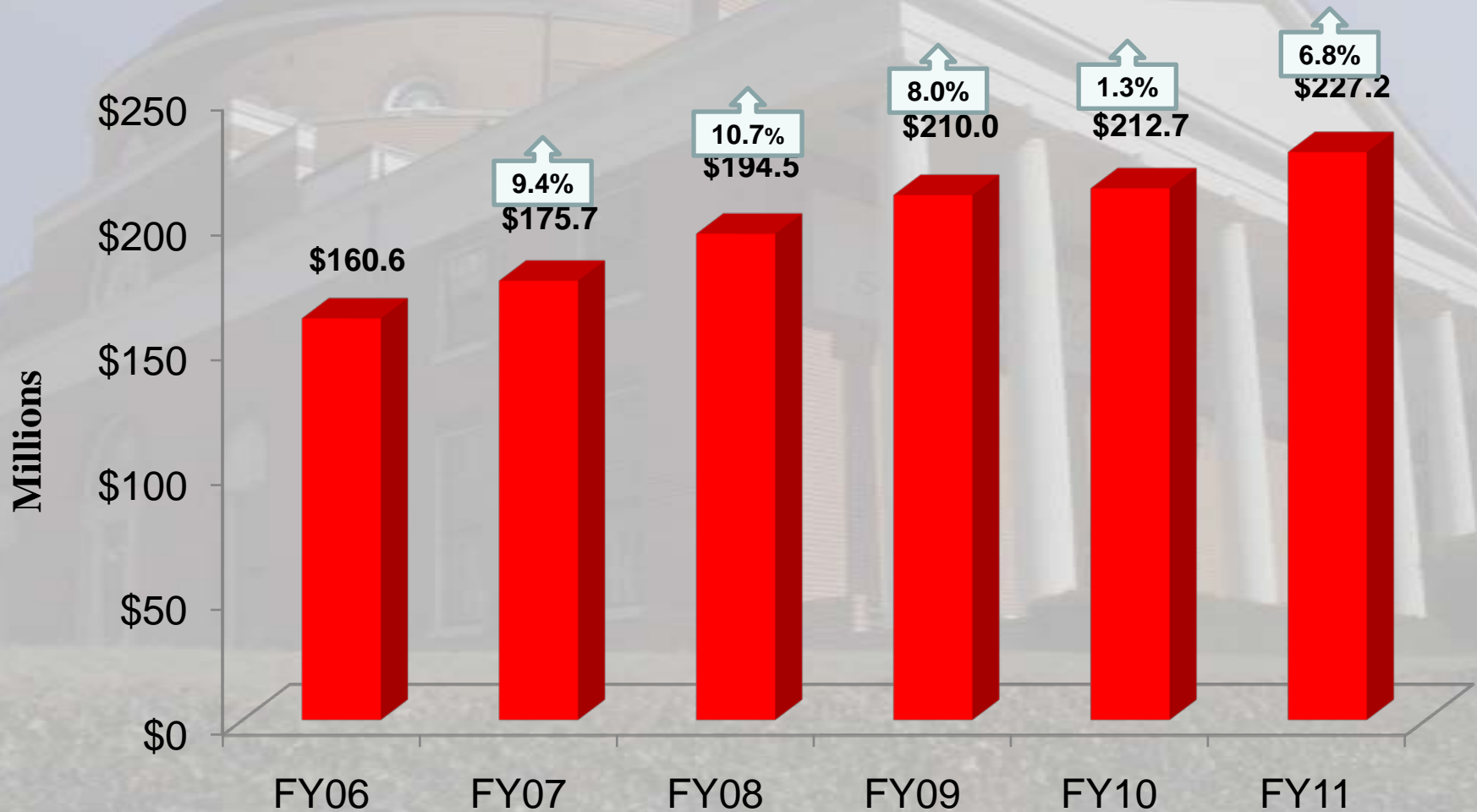
## Patient Care Statistics

	2010	2011	Change
<b>Total Patient Volumes (includes office and <u>inpatient/outpatient visits</u>)</b>	1,092,623	1,131,405	3.5% ↑
<b>Admissions (UMMC only; includes newborns and trauma)</b>	38,332	39,585	3.3% ↑
<b><u>Inpatient Surgeries</u> (UMMC only; includes trauma)</b>	14,035	14,896	6.1% ↑



# Practice Plan Performance

## Total Clinical Revenue FY2006-2011



# University of Maryland School of Medicine

## Education



# Total Student Enrollment

*(Medical, Graduate, Allied Health and Public Health)*

STUDENTS	2010	2011
Medical (MD)	625	634
MD/PhD	35	37
Graduate (MS/PhD)	333	345
Public Health (MPH)	54	33
Physical Therapy (DPT/PhD)	168	168
Genetic Counseling (MS)	12	13
Medical and Research Tech (BS/MS)	55	72
<b>TOTAL</b>	<b>1,282</b>	<b>1,302</b>

671

378

253



# Student Diversity\*



2011 Percent Minority*	
Medical (MD)	14%
MD/PhD	14%
Graduate (MS/PhD)	14%
Physical Therapy	13%
Public Health	26%
Medical & Research Technology	38%

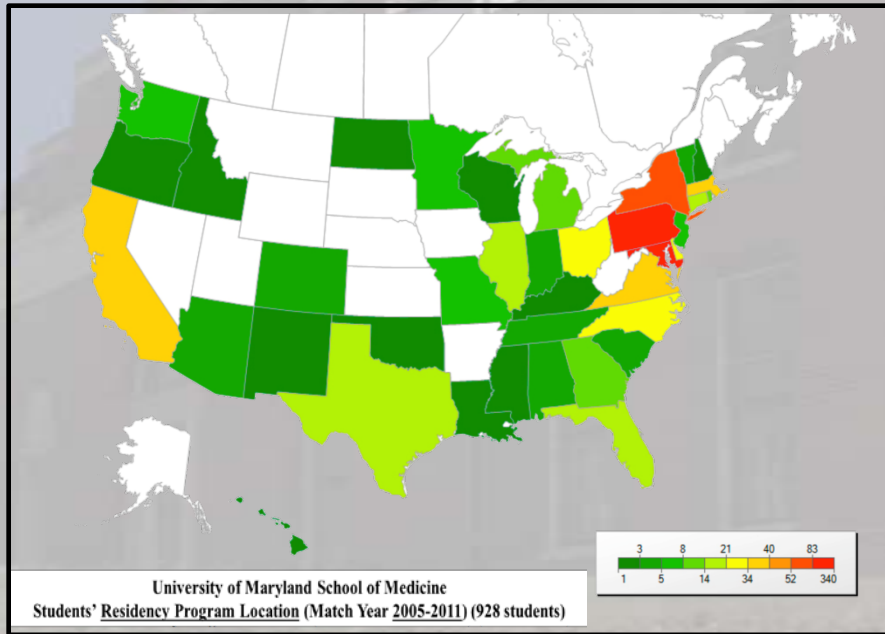
**\*Includes Native American, African American, Hispanic American, and Multi-Racial Americans**



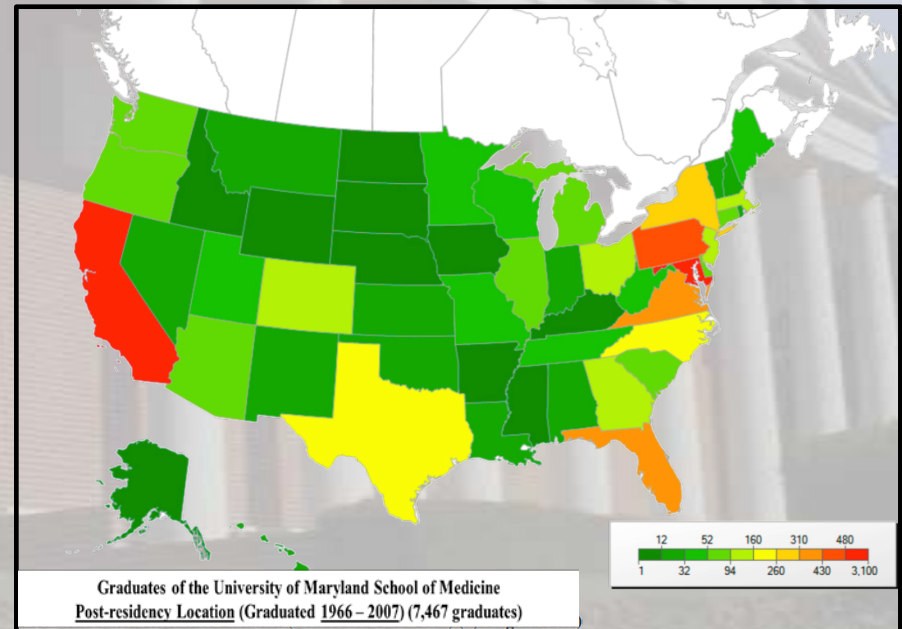
UNIVERSITY of MARYLAND  
SCHOOL OF MEDICINE

# A National Medical School

Where our students go?



Where our "students" practice?



# University of Maryland School of Medicine

## Finance & Philanthropy



# FY 2011 REVENUES

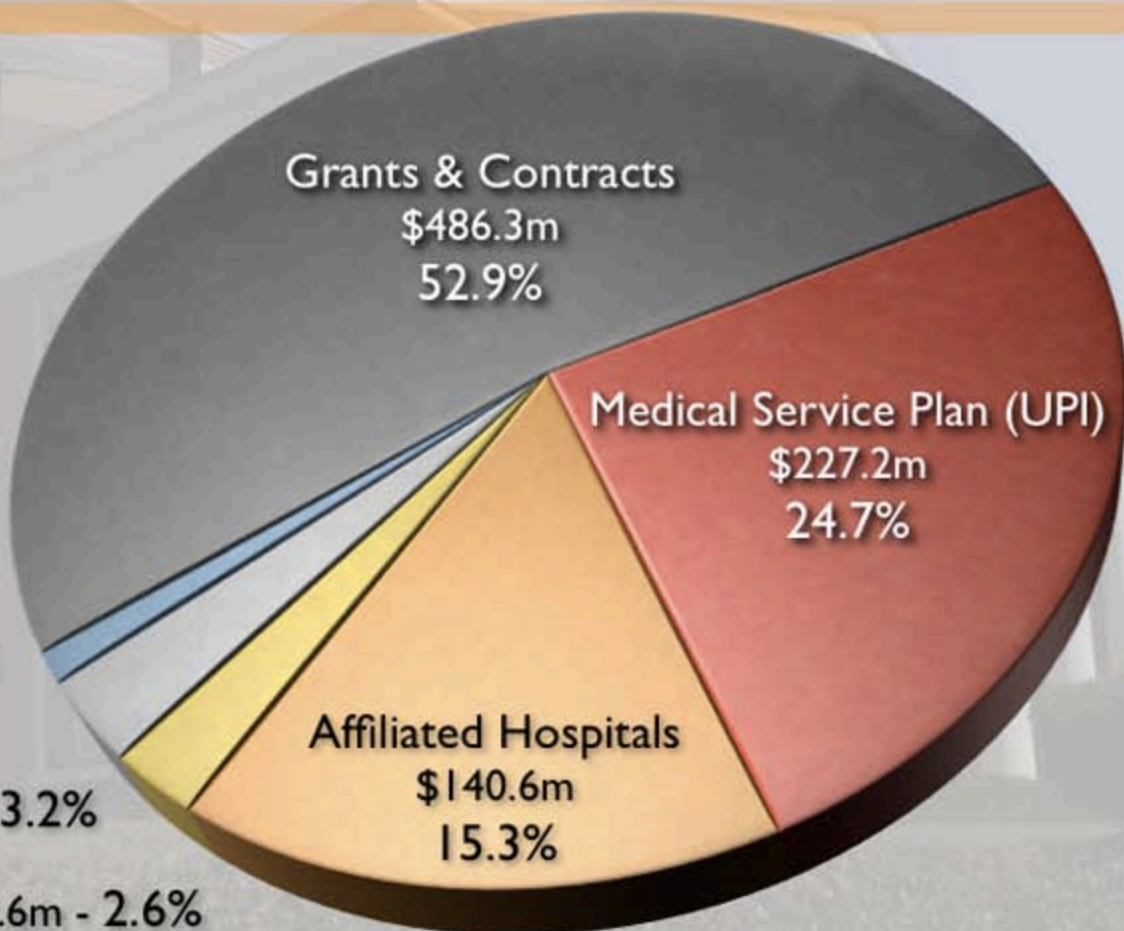
## Total Revenues

Nearly \$1 billion

## Economic Impact

Nearly \$2 billion

- Gifts & Other Income Expended  
\$11.3m - 1.2%
- State Appropriations - \$29.6m\* - 3.2%
- Tuition & Fees - \$23.6m - 2.6%



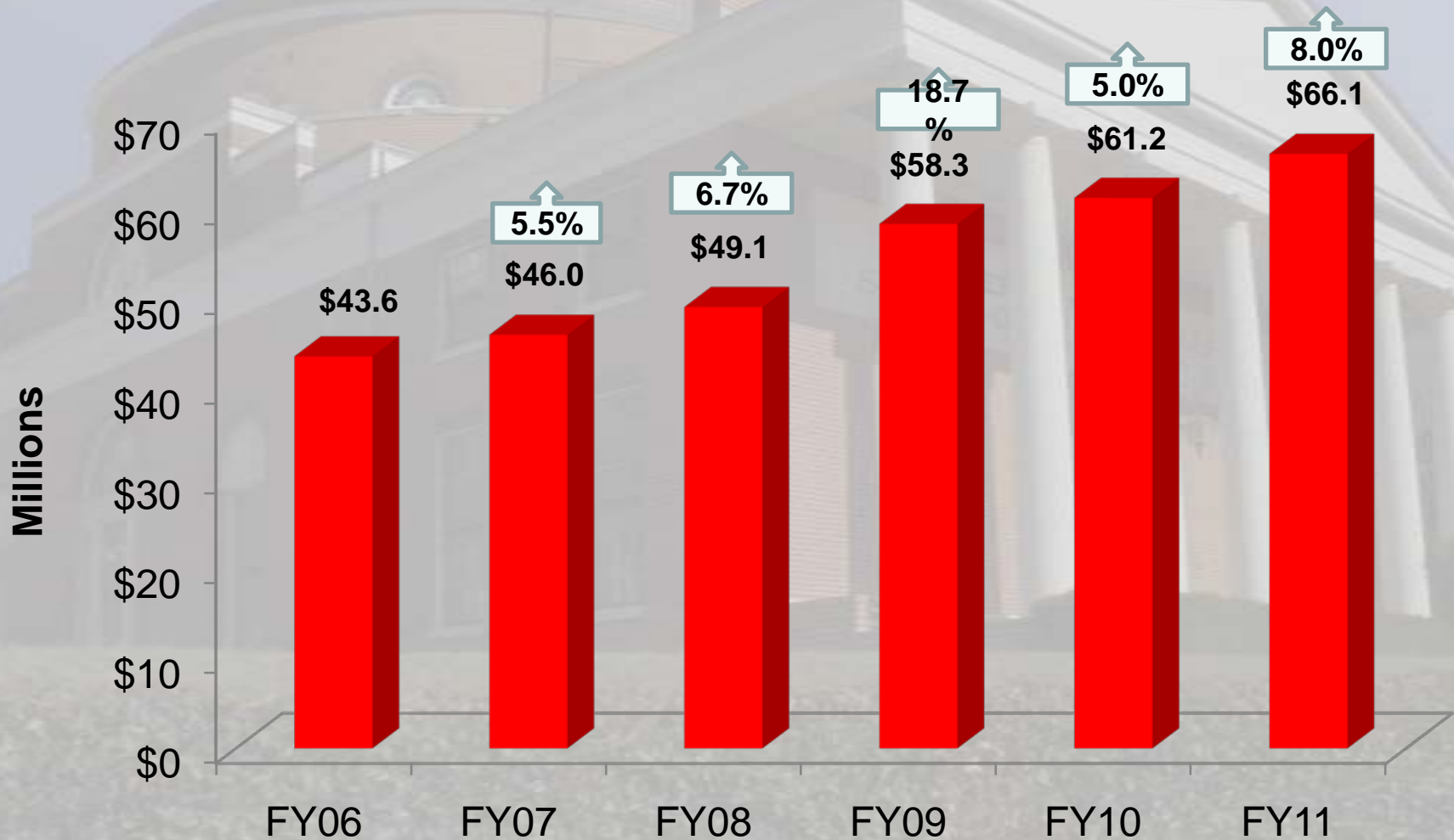
**Total Clinical Contribution - 40.0%**

\* Includes fringe benefits and Maryland Psychiatric Research Center transfer from contract to state appropriation.



# Private Support by Year

## *FY2006 – FY2011*



# **Academic Citizenship**

## ***Major Emphasis in the SOM***

**Participation and contributions of faculty are important to the success of the School of Medicine**



# School of Medicine Future Priorities

- Advance the \$500 Million Campaign: Transforming Medicine Beyond Imagination
  - To increase scholarship support
  - Expand endowed professorships
  - Meet future programmatic and other critical needs
- Increase Financial Margins and Reserves in all academic units
- Implement Ambitious Five-Year Strategic Plan, “*Taking a Quantum Leap Forward*”
- Work with UMMS to integrate, collaborate and coordinate clinical services across system and satellites
- Build and/or Expand Centers of Research and Clinical Excellence
- Advance research education at all levels, and expand medical education program to meet regional and current needs
- Expand UMSOM research engine into the I-270 Biotechnology corridor
- Explore new global opportunities



# University of Maryland School of Medicine

## *A Third Century*



**America's Oldest Public Medical School -**  
*Where Discovery Transforms Medicine*



UNIVERSITY of MARYLAND  
SCHOOL OF MEDICINE